

NORTH 1/4 COR SEC 20, T 17N, R 68W 057828

RECORDED
LARAMIE COUNTY
CHEYENNE, WY.

CERTIFIED LAND CORNER RECORDATION '89 MAY 30 AM 11 26

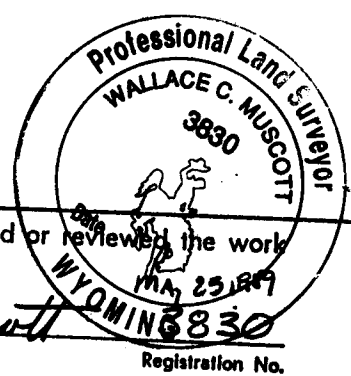
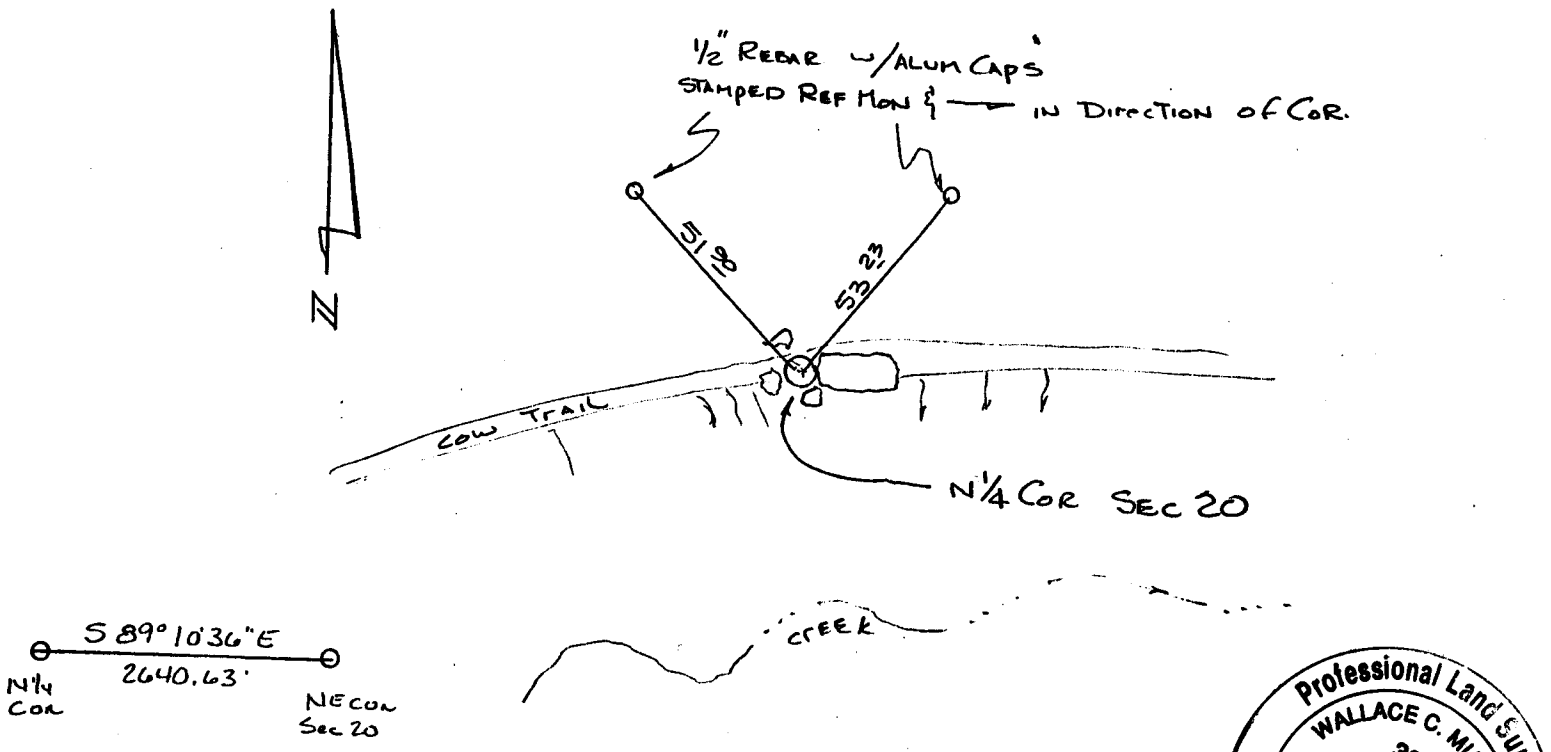
DESCRIPTION OF CORNER EVIDENCE FOUND, AND ORIGINAL RECORD (if known)

FOUND ORIGINAL STONE WITH 1/4 CHISELED IN NORTH EDGE

DESCRIPTION OF MONUMENT AND ACCESSORIES ESTABLISHED TO PERPETUATE THE ORIGINAL LOCATION OF THIS CORNER:

IN PLACE OF ORIG STONE WE SET A 5/8" x 30" REBAR WITH A CORP OF ENGINEERS BRASS CAP STAMPED 1/4 S 17 S 20 T 17N, R 68W THEN PLACED ORIG STONE ALONG SIDE TIED OFF AS SHOWN BELOW

SKETCH, WITH COURSE AND DISTANCE TO ADJACENT CORNER IF DETERMINED IN THIS SURVEY. (May Sketch or Paste Reproduction on Reverse Side.)



I, WALLACE MUSCOTT certify that I have carefully performed or reviewed the work done on the diagrammed corner as reported on this recordation form and approve the same.

Wallace C. Muscott
Signature of Surveyor

Registration No.

STATE OF WYOMING,
Office of Clerk and Recorder,
County of _____

This "corner record" was filed for record on the _____ day of _____, 19____, was noted on the cross-index plat and is assigned page No. _____, in book No. _____

Janet C. Whitehead
County Official

Cross Index No.	N-7	T. 17N	R. 68W	Mer. 6 th
		T. _____	R. _____	Mer.
		T. _____	R. _____	Mer.
		T. _____	R. _____	Mer.
		T. _____	R. _____	Mer.
		T. _____	R. _____	Mer.
		T. _____	R. _____	Mer.